

OWNER'S MANUAL



D|M Saunas



www.mdsaunas.com

Carefully and thoroughly read this manual before using your sauna for the first time. We recommend keeping this manual for regular review and future reference.

TABLE OF CONTENTS

Packaging Information Page	(2)
Installing The Panels	(3)
Line Installation	(7)
Sauna Heater Installation	(8)
Accessories Installation	(9)
Digital Keypad Instructions	(10)
Frequently Asked Questions Page	(11)
Maintenance Page	(11)
Transportation and Storage	(11)

Installation



- a. Do not plug any other appliances into the outlet with your sauna.
- b. The sauna should always be placed on a fairly leveled surface.
- c. Do not store flammable objects or chemical substances near the sauna.

Assembly Instructions

Assembly of the sauna requires at least two adults to complete. Please read the instructions thoroughly before and during assembly to ensure proper installation of the unit. If you encounter any problems or have questions during assembly, please feel free to contact our Customer Service: michael@roxydisplay.com.

(1) LOCATION OF SAUNA

When determining a location for your sauna, please keep in mind the following:

- 1. The Main Power Cord on the sauna must be easily accessible.
- 2. The location must be leveled.

(2) PLACING BACK PANEL

Place the Bottom Panel on the ground.



(3) INSTALLING BOTTOM PANEL

Place the Back Panel on the Bottom Panel.



(4) CONNECTING BACK PANEL TO SIDE PANEL

Connect the Back Panel to the Side Panel by lining up the Back Panel on the groove. Align buckles on both panels and fasten them if applicable.



(5) CONNECTING THE REMAINING SIDE PANELS

Connect the remaining Side Panels to the Back Panels by lining up buckles and fastening them.



(6) INSTALLING BENCH PANEL

Slide down the Bench Panel by lining up its sides with the Vertical Guides on each Side Panel.

1. Be careful not to scratch the Side Panels when positioning the Bench Panel.
2. Make sure you screw in snug but not overtightened.



(7) CONNECTING FRONT PANEL

Place the Front Panel onto the recessed area. Align buckles with both Side Panels and secure in place by fastening the buckles.



(8) PLACING TOP PANEL

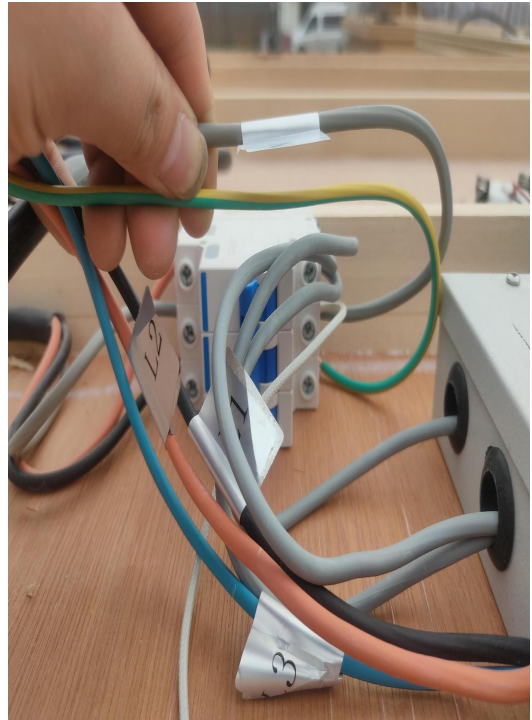
1. Open Sliding Doors located on the Top Panel.
 2. Put the Top Panel on the assembled panels.
- The Top Panel must be positioned so that the Cables on the Top Panel are in the front left corner.
3. Plug the heater wires through the holes around the Top Panel
 4. Gently place the Top Panel onto the rest of the assembled panels. When all four corners are in place, gently push down the Top Panel until it is snugly fit over the rest of the panels.
 5. Make sure that the cables around the corners do not get pinched between the panels.



(9) POWER SUPPLY CONNECTIONS

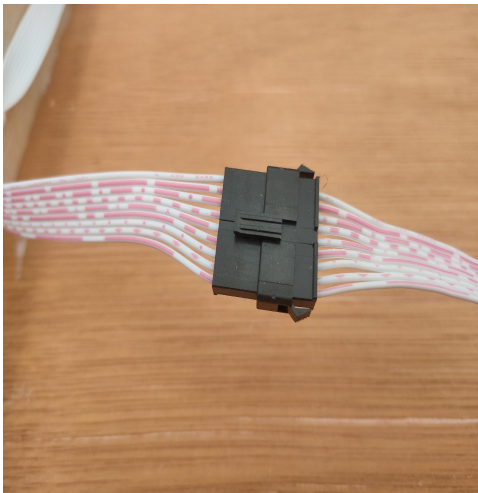
All the inside wall's heater elements are pre-wired inside the wall. Make Power Supply connections on the Top Panel.

1. The three-core power cord has been installed on the switch (Red and gray input 110V, Black connect to ground wire)
2. The six-core power cord (Black, red and blue connect to the **[Aout]** **[Bout]** **[Cout]**, Gray and yellow-green connect to the circuit breaker)
2. Make sure all connections are secure and close the cover.



(10) CONTROL PANEL CONNECTIONS

1. Connect the white 9 pin plug
2. Connect the black 2 pin plug



(11) DOORKNOB INSTALLATION

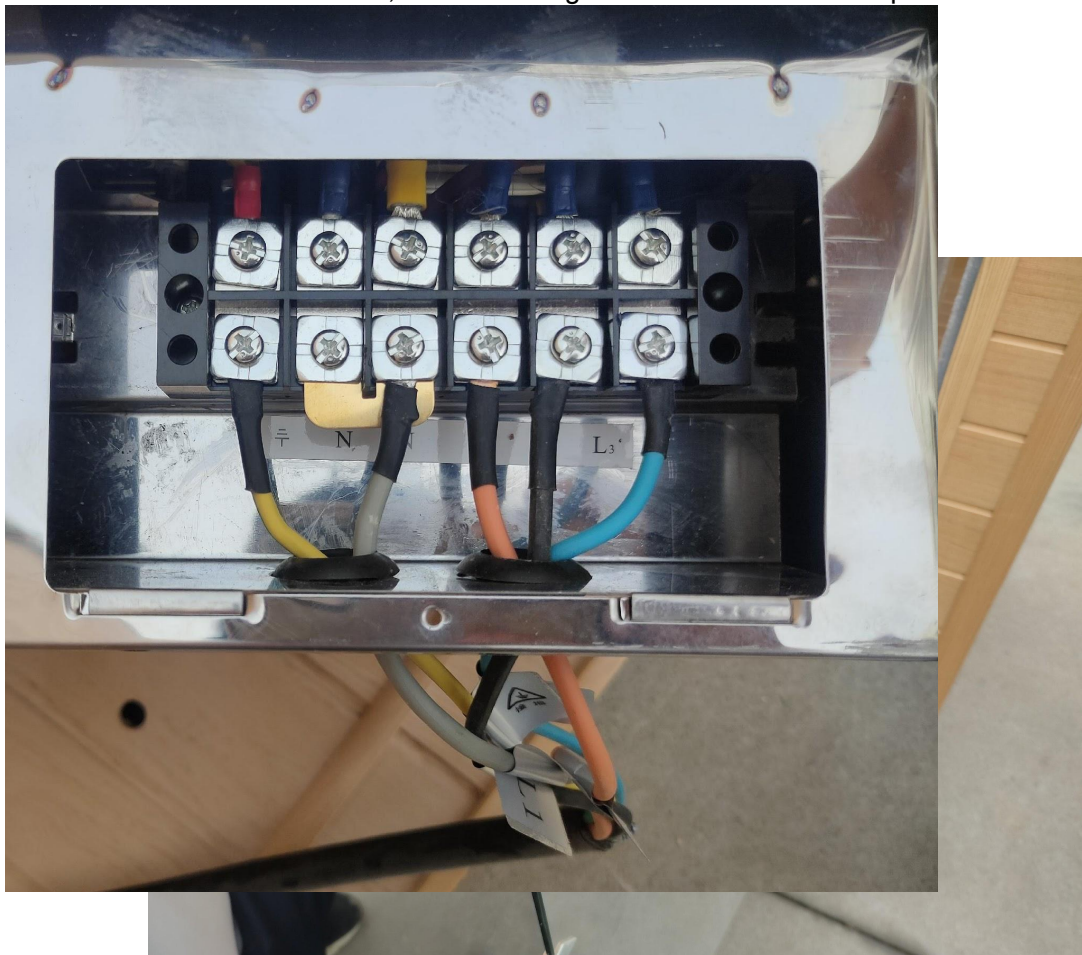
Install the Outside Doorknob

1. Align the Outside Doorknob against 2 holes on the outside of the door, hold it at an angle against the door.
2. Insert the Screw into the hole located on the inside of the door.

Screw until it is tightly fit.

SAUNA HEATER INSTALLATION

1. Loosen the screws and take the cover off.
3. Make the wire on the bottom of the side panel go through the hole.
3. Connect the zero conductor ,front line and ground wire to the related place.



(13) INSTALL THE SAUNA GUARD



Digital Keypad Instructions

Plug in the power cord to the electrical outlet.



A) START-UP

1. Open the switch to turn the power on, POWER INDICATOR turns on.
2. Press START button to start.

B) SET THE TEMPERATURE AND TIME

1. Press SET button again, SET INDICATOR turns on,
2. Press the【+】and【-】buttons to adjust the temperature. Temperature value will increase or decrease by 1 degree at a time. By holding down the【+】 and 【-】 keys, you can speed up the rate of change.
Repress SET key again and now the temperature window displays the present temperature.
3. Press TIME key【+】and 【-】to adjust the time. Time value will increase or decrease by 1 minute

at a time. By holding down the【+】and【-】keys, you can speed up the rate of change. The time window displays the count down time until—when heating stops.

C) TURN OFF THE SAUNA

Turn off the switch to stop the sauna.

D) INSIDE CONTROLLER

If you can choose the inside controller, the operation method is just the same as the outside control panel.

Note: if do not use the sauna for a long time, please take off the plug.

PLUG YOUR SAUNA INTO THE WALL OUTLET AND IT'S READY TO BE ENJOYED BY YOU AND YOUR FAMILY!

Frequently Asked Questions

PS: MAKING SURE SHUT OFF ELECTRICITY BEFORE YOU DOING IT.

1. The control panel does not work

	Problem	Explanation	Solution
1	The power indicator is not on.	The fuse is broken or the sauna is not plugged in.	Change the fuse or plug in the sauna.
2	The soft keys do not work.	Unplug sauna,wait a minute, and plug back into power source.	

2. The sauna heater doesn't work.

Check the wire connection and fasten them. They may lose and not connect well.

Maintenance

1. Cleaning

a. Clean the faceplate with a wet towel, or clean with a small amount of hand-soap missed with warm water if necessary. Clean the sauna room with a wet cotton towel, dry with a clean dry towel. Do not use benzene, alcohol, or strong cleaning chemicals on sauna.

NOTE: Any chemical that can damage wood material will damage the sauna and the protection layer that is on the wood.

Transportation and storage

1. Avoid exposure to rain, snow or strong collisions during transport.
2. Do not store in damp environments.

sauna room 1
owner's manual 1